

Multi zone inverter mini split

MODEL: TW12HM2C2DI

TOSOT

Job Name: _____

Engineer Name: _____

System No: _____

- File Resubmit
 Approval Other

Location: _____

Contractor: _____

Date: _____

General Features

- 2 Thermistor control
- 24-Hour on/off Timer
- Auto operation
- Auto restart
- Chaos swing
- Control lock function
- Drain Pump
- Inverter
- Load Protection Features
- Over-Current Protection
- Anti Freeze Protection
- Wireless Remote control
- Optional Wired controller



Unit Performance:

Nominal Cooling Capacity (Btu/h)	12,000
Nominal Heating Capacity (Btu/h)	13,000

Set Temperature

Cooling (°F WB)	61~86
Heating (°F DB)	61~86

Piping

Liquid Line (in)	1/4
Gas Line (in)	3/8
Drain ID (in)	5/8

Electrical Specification

Power Supply	208-230V / 60Hz
Communications Wire Size	AWG 16
Rated Amps (A)	3.15

Fan

Type	Cross-flow
Quantity	1
Motor/Drive	Direct drive
Air Flow Rate (CFM)	335/277/253/218

Unit Specification

Refrigerant Type	R410A
Refrigerant Control	EEV
Sound Pressure (dB(A))	44/39/36/33
Primary Filter	Yes
Net Weight (lbs)	22
Dehumidification (Pt/h)	2.96

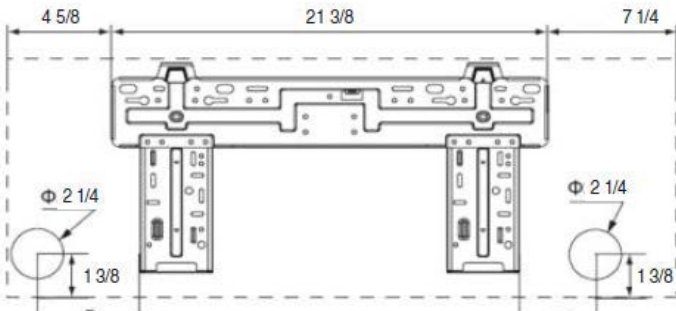
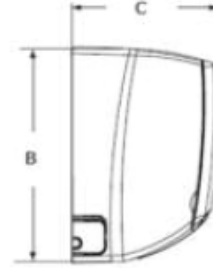
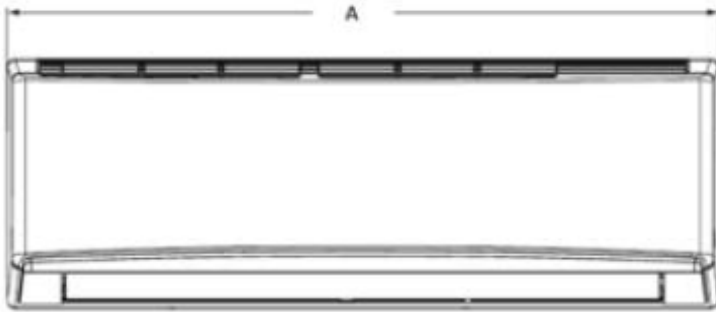


Multi zone inverter mini split

MODEL: TW12HM2C2DI

TOSOT

Outline Dimension Diagram



Dimensions

A	33.4
B	11.4
C	8.2

GLOSSARY

SEER - Seasonal Energy Efficiency Ratio

EER - Energy Efficiency Ratio

HSPF - Heating Seasonal Performance Factor

MOP - Maximum Overcurrent Protection

MCA - Minimum Circuit Ampacity

TOSOT

5965 Chemin de la Côte de Liesse
Saint laurent, QC, Canada, H4T 1C3

Contact: +1 438 792 1956

info@tosotusa.com

www.tosotusa.com